

# LRB-A Rubber Mounts

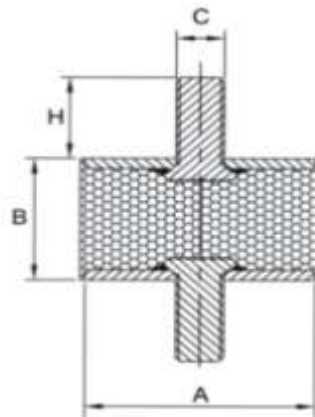
LIVA-EP  
利瓦环保

## Feature:

- ★Reduction of structure-borne noise.
- ★Reduction of vibration from rotating or reciprocating machinery
- ★Sturdy, reliable construction.
- ★Reduce effects of misalignment and distortion.
- ★Available in a wide load range.
- ★Low cost.
- ★Prevent shock and vibration damage to sensitive equipment.
- ★Resist oil, ozone and caustic materials.

## Applications:

HVAC equipment、Relays and control panels、Pumps and Compressors、Machinery



Type	Dimensions (mm)				Capacity KG		Optimum reduction mm
	A	B	C	H	40°	60°	
LRB-A08*08	8	8	M3	6 / 10	4	8	1.5
LRB-A10*08	10	10	M3/M4	6 / 10	5	10	1.5
LRB-A10*10	10	10	M3/M4	6 / 10	5	10	2
LRB-A10*15	10	15	M3/M4	6 / 10	5	10	2
LRB-A15*08	15	8	M4/M5	10 / 12/15	10	18	2
LRB-A15*10	15	10	M4/M5	10 / 12/15	10	18	2
LRB-A15*15	15	15	M4/M5	10 / 12/15	10	18	2
LRB-A15*20	15	20	M4/M5	10 / 12/15	10	18	2
LRB-A15*30	15	30	M4/M5	10 / 12/15	10	18	2
LRB-A20*08	20	8	M6	8 / 10/16	10	20	1.5
LRB-A20*10	20	10	M6	8 / 10/16	10	20	1.5
LRB-A20*15	20	15	M6	8 / 10/16	13	25	2
LRB-A20*20	20	20	M6	8 / 10/16	13	25	2
LRB-A20*25	20	25	M6	8 / 10/16	15	28	2
LRB-A20*30	20	30	M6	8 / 10/16	22	35	2.5
LRB-A25*10	25	10	M6/M8	10 / 15/23	13	25	1.5
LRB-A25*15	25	15	M6/M8	10 / 15/23	17	33	2
LRB-A25*20	25	20	M6/M8	10 / 15/23	17	33	2
LRB-A25*25	25	25	M6/M8	10 / 15/23	17	33	2
LRB-A25*30	25	30	M6/M8	10 / 15/23	21	41	2.5

# LRB-A Rubber Mounts

LIVA-EP  
利瓦环保

LRB-A30*15	30	15	M8	16 / 20/23	22	40	2
LRB-A30*20	30	20	M8	16 / 20/23	22	40	2
LRB-A30*25	30	25	M8	16 / 20/23	22	40	2
LRB-A30*30	30	30	M8	16 / 20/23	28	50	2.5
LRB-A30*40	30	40	M8	16 / 20/23	28	50	2.5
LRB-A40*20	40	20	M8/M10	23 / 27	26	48	2
LRB-A40*25	40	25	M8/M10	23 / 27	26	48	2
LRB-A40*30	40	30	M8/M10	23 / 27	32	60	2.5
LRB-A40*40	40	40	M8/M10	23 / 27	38	72	3
LRB-A50*20	50	20	M10/M12	23 / 27/32	30	56	2
LRB-A50*25	50	25	M10/M12	23 / 27/32	30	56	2
LRB-A50*30	50	30	M10/M12	23 / 27/32	38	70	2.5
LRB-A50*35	50	35	M10/M12	23 / 27/32	38	70	2.5
LRB-A50*40	50	40	M10/M12	23 / 27/32	45	85	3
LRB-A50*45	50	45	M10/M12	23 / 27/32	45	85	3
LRB-A50*50	50	50	M10/M12	23 / 27/32	45	85	3
LRB-A60*30	60	30	M10/M12	27 / 32/37	60	110	2.5
LRB-A60*35	60	35	M10/M12	27 / 32/37	60	110	2.5
LRB-A60*40	60	40	M10/M12	27 / 32/37	60	110	2.5
LRB-A60*45	60	45	M10/M12	27 / 32/37	72	132	3
LRB-A60*50	60	50	M10/M12	27 / 32/37	72	132	3
LRB-A60*60	60	60	M10/M12	27 / 32/37	72	132	3
LRB-A70*65	70	65	M12/M16	37 / 42	160	280	3.5
LRB-A75*25	75	25	M12/M16	37 / 42	100	180	2
LRB-A75*40	75	40	M12/M16	37 / 42	150	270	3
LRB-A75*45	75	45	M12/M16	37 / 42	150	270	3
LRB-A75*50	75	50	M12/M16	37 / 42	150	270	3
LRB-A75*55	75	55	M12/M16	37 / 42	175	315	3.5
LRB-A80*40	80	40	M12/M16	42 / 47	150	280	3
LRB-A80*50	80	50	M12/M16	42 / 47	175	280	3
LRB-A80*60	80	60	M12/M16	42 / 47	205	325	3.5
LRB-A80*80	80	80	M12/M16	42 / 47	235	370	4
LRB-A100*30	100	30	M16	42 / 47	190	350	2.5
LRB-A100*40	100	40	M16	42 / 47	230	420	3
LRB-A100*45	100	45	M16	42 / 47	230	420	3
LRB-A100*50	100	50	M16	42 / 47	230	420	3
LRB-A100*55	100	55	M16	42 / 47	270	490	3.5
LRB-A100*60	100	60	M16	42 / 47	310	560	4
LRB-A100*75	100	75	M16	42 / 47	310	560	4
LRB-A100*100	100	100	M16	42 / 47	390	700	5
LRB-A150*75	150	75	M16/M20	42 / 47	750	1400	5